



## ABOUT THE STUDY

The Minnesota Department of Transportation (MnDOT) intends to reconstruct four blocks of US Highway 12 and Minnesota Highway 22 through downtown Litchfield from Commercial Street to 4th Street. This project is planned for 2019 and includes the reconstruction of the existing roadway and sidewalks from building face to building face. Prior to construction, MnDOT is asking for public feedback as part of the US 12 Downtown Litchfield Study. This study aims to identify the needs of the Litchfield community and other roadway users and provide recommendations and conceptual drawings for a street design that will balance the needs of multiple stakeholders.

*We want to hear from you!*

Visit the Website and Complete the Survey:

**[www.us12downtownlitchfield.com](http://www.us12downtownlitchfield.com)**

### **Contact Information:**

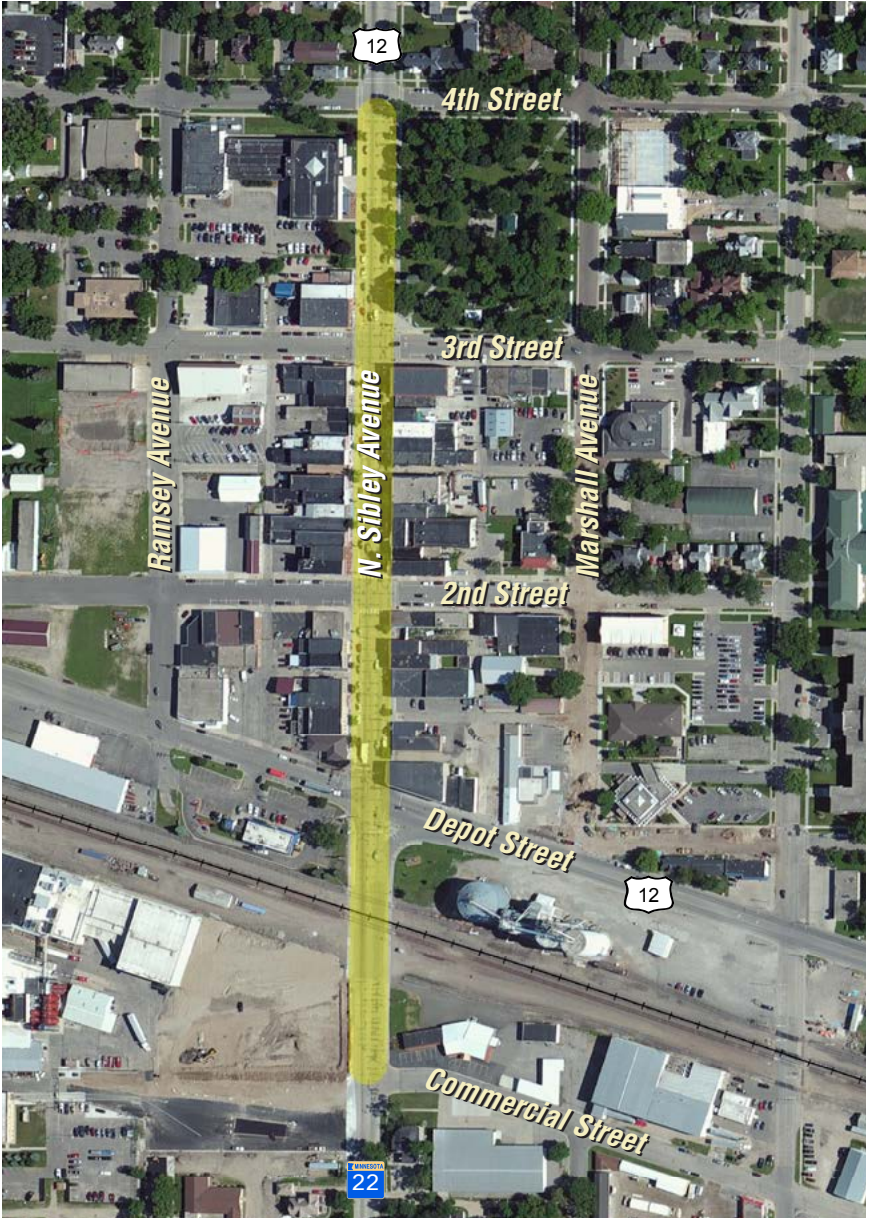
MnDOT  
Lindsey Knutson  
District 8 Planning Director  
320.214.6365  
lindsey.knutson@state.mn.us

SRF Consulting Group  
Craig Vaughn  
Project Manager  
763.249.6774  
cvaughn@srfconsulting.com



US 12 DOWNTOWN LITCHFIELD STUDY

# STUDY AREA



US 12 DOWNTOWN LITCHFIELD STUDY